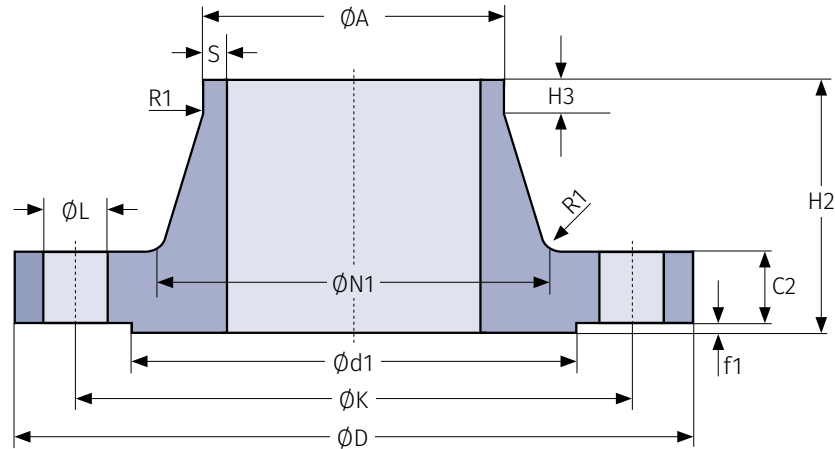


WELD-NECK FLANGE
**VORSCHWEISSFLANSCH
TYP 11 PN 2,5**

nach EN 1092-1


TYP 11 PN 2,5

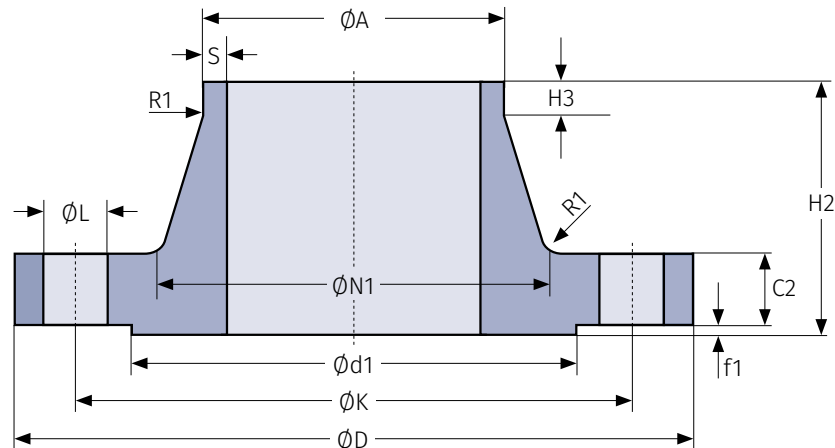
Maße für DN < 900 siehe PN 6 / Dimensions for DN < 900 see PN 6

| DN | A | S | D | K | d1 | N1 | C2 | H2 | H3 | R1 | f1 | L | n | M | kg |
|------|------|-----|------|------|------|------|-----|-----|----|----|----|----|----|-----|------|
| 900 | 914 | 7,1 | 1075 | 1020 | 980 | 942 | 30 | 74 | 16 | 12 | 5 | 30 | 24 | M27 | 75,5 |
| 1000 | 1016 | 7,1 | 1175 | 1120 | 1080 | 1045 | 30 | 74 | 16 | 16 | 5 | 30 | 28 | M27 | 85,6 |
| 1200 | 1219 | 8,0 | 1375 | 1320 | 1280 | 1245 | 32 | 94 | 16 | 16 | 5 | 30 | 32 | M27 | 104 |
| 1400 | 1422 | 8,0 | 1575 | 1520 | 1480 | 1445 | 38 | 96 | 16 | 16 | 5 | 30 | 36 | M27 | 133 |
| 1600 | 1626 | 8,8 | 1790 | 1730 | 1690 | 1645 | 46 | 102 | 20 | 16 | 5 | 30 | 40 | M27 | 188 |
| 1800 | 1829 | 10 | 1990 | 1930 | 1890 | 1845 | 46 | 110 | 20 | 16 | 5 | 30 | 44 | M27 | 215 |
| 2000 | 2032 | 11 | 2190 | 2130 | 2090 | 2045 | 50 | 122 | 22 | 16 | 5 | 30 | 48 | M27 | 260 |
| 2200 | 2235 | 11 | 2405 | 2340 | 2295 | 2248 | 56 | 129 | 25 | 18 | 5 | 33 | 52 | M30 | 332 |
| 2400 | 2438 | 11 | 2605 | 2540 | 2495 | 2448 | 62 | 143 | 25 | 18 | 5 | 33 | 56 | M30 | 392 |
| 2600 | 2620 | 11 | 2805 | 2740 | 2695 | 2648 | 64 | 148 | 25 | 18 | 5 | 33 | 60 | M30 | 497 |
| 2800 | 2820 | 11 | 3030 | 2960 | 2910 | 2848 | 74 | 161 | 25 | 18 | 5 | 36 | 64 | M33 | 668 |
| 3000 | 3020 | 11 | 3230 | 3160 | 3110 | 3050 | 80 | 170 | 25 | 18 | 5 | 36 | 68 | M33 | 772 |
| 3200 | 3220 | 11 | 3430 | 3360 | 3310 | 3250 | 84 | 180 | 25 | 20 | 5 | 36 | 72 | M33 | 869 |
| 3400 | 3420 | 11 | 3630 | 3560 | 3510 | 3450 | 90 | 194 | 28 | 20 | 5 | 36 | 76 | M33 | 988 |
| 3600 | 3620 | 11 | 3840 | 3770 | 3720 | 3652 | 96 | 201 | 28 | 20 | 5 | 36 | 80 | M33 | 1156 |
| 3800 | 3820 | 11 | 4045 | 3970 | 3920 | 3852 | 102 | 212 | 28 | 20 | 5 | 39 | 80 | M36 | 1309 |
| 4000 | 4020 | 11 | 4245 | 4170 | 4120 | 4052 | 106 | 226 | 28 | 20 | 5 | 39 | 84 | M36 | 1441 |

TYP 11 PN 2,5

WELD-NECK FLANGE
**VORSCHWEISSFLANSCH
TYP 11 PN 6**

nach EN 1092-1


TYP 11 PN 6

| DN | A | S | D | K | d1 | N1 | C2 | H2 | H3 | R1 | f1 | L | n | M | kg |
|------|--------|------|------|------|------|------|-----|-----|----|----|----|----|----|-----|-------|
| 10 | 17,2 | 2,0 | 75 | 50 | 35 | 26 | 12 | 28 | 6 | 4 | 2 | 11 | 4 | M10 | 0,353 |
| 15 | 21,3 | 2,0 | 80 | 55 | 40 | 30 | 12 | 30 | 6 | 4 | 2 | 11 | 4 | M10 | 0,408 |
| 20 | 26,9 | 2,3 | 90 | 65 | 50 | 38 | 14 | 32 | 6 | 4 | 2 | 11 | 4 | M10 | 0,621 |
| 25 | 33,7 | 2,6 | 100 | 75 | 60 | 42 | 14 | 35 | 6 | 4 | 2 | 11 | 4 | M10 | 0,762 |
| 32 | 42,4 | 2,6 | 120 | 90 | 70 | 55 | 14 | 35 | 6 | 6 | 2 | 14 | 4 | M12 | 1,11 |
| 40 | 48,3 | 2,6 | 130 | 100 | 80 | 62 | 14 | 38 | 7 | 6 | 3 | 14 | 4 | M12 | 1,26 |
| 50 | 60,3 | 2,9 | 140 | 110 | 90 | 74 | 14 | 38 | 8 | 6 | 3 | 14 | 4 | M12 | 1,43 |
| 65 | 76,1 | 2,9 | 160 | 130 | 110 | 88 | 14 | 38 | 9 | 6 | 3 | 14 | 4 | M12 | 1,77 |
| 80 | 88,9 | 3,2 | 190 | 150 | 128 | 102 | 16 | 42 | 10 | 8 | 3 | 18 | 4 | M16 | 2,88 |
| 100 | 114,3 | 3,6 | 210 | 170 | 148 | 130 | 16 | 45 | 10 | 8 | 3 | 18 | 4 | M16 | 3,41 |
| 125 | 139,7 | 4,0 | 240 | 200 | 178 | 155 | 18 | 48 | 10 | 8 | 3 | 18 | 8 | M16 | 4,65 |
| 150 | 168,3 | 4,5 | 265 | 225 | 202 | 184 | 18 | 48 | 12 | 10 | 3 | 18 | 8 | M16 | 5,50 |
| 200 | 219,1 | 6,3 | 320 | 280 | 258 | 236 | 20 | 55 | 15 | 10 | 3 | 18 | 8 | M16 | 8,60 |
| 250 | 273,0 | 6,3 | 375 | 335 | 312 | 290 | 22 | 60 | 15 | 12 | 3 | 18 | 12 | M16 | 11,7 |
| 300 | 323,9 | 7,1 | 440 | 395 | 365 | 342 | 22 | 62 | 15 | 12 | 4 | 22 | 12 | M20 | 15,3 |
| 350 | 355,6 | 7,1 | 490 | 445 | 415 | 385 | 22 | 62 | 15 | 12 | 4 | 22 | 12 | M20 | 20,3 |
| 400 | 406,4 | 7,1 | 540 | 495 | 465 | 438 | 22 | 65 | 15 | 12 | 4 | 22 | 16 | M20 | 23,1 |
| 450 | 457,0 | 7,1 | 595 | 550 | 520 | 492 | 22 | 65 | 15 | 12 | 4 | 22 | 16 | M20 | 27,0 |
| 500 | 508,0 | 7,1 | 645 | 600 | 570 | 538 | 24 | 68 | 15 | 12 | 4 | 22 | 20 | M20 | 30,8 |
| 600 | 610,0 | 7,1 | 755 | 705 | 670 | 640 | 30 | 70 | 16 | 12 | 5 | 26 | 20 | M24 | 44,0 |
| 700 | 711,0 | 8,0 | 860 | 810 | 775 | 740 | 30 | 76 | 16 | 12 | 5 | 26 | 24 | M24 | 53,7 |
| 800 | 813,0 | 8,0 | 975 | 920 | 880 | 842 | 30 | 76 | 16 | 12 | 5 | 30 | 24 | M27 | 64,4 |
| 900 | 914,0 | 8,0 | 1075 | 1020 | 980 | 942 | 34 | 78 | 16 | 12 | 5 | 30 | 24 | M27 | 79,2 |
| 1000 | 1016,0 | 8,0 | 1175 | 1120 | 1080 | 1045 | 38 | 82 | 16 | 16 | 5 | 30 | 28 | M27 | 98,6 |
| 1200 | 1219,0 | 8,8 | 1405 | 1340 | 1295 | 1248 | 42 | 104 | 20 | 16 | 5 | 33 | 32 | M30 | 152 |
| 1400 | 1422,0 | 8,8 | 1630 | 1560 | 1510 | 1452 | 56 | 114 | 20 | 16 | 5 | 36 | 36 | M33 | 246 |
| 1600 | 1626,0 | 10,0 | 1830 | 1760 | 1710 | 1655 | 63 | 119 | 20 | 16 | 5 | 36 | 40 | M33 | 309 |
| 1800 | 1829,0 | 11,0 | 2045 | 1970 | 1920 | 1855 | 69 | 133 | 20 | 16 | 5 | 39 | 44 | M36 | 400 |
| 2000 | 2032,0 | 12,5 | 2265 | 2180 | 2125 | 2058 | 74 | 146 | 25 | 16 | 5 | 42 | 48 | M39 | 516 |
| 2200 | 2235,0 | 14,0 | 2475 | 2390 | 2335 | 2260 | 81 | 154 | 25 | 18 | 5 | 42 | 52 | M39 | 645 |
| 2400 | 2438,0 | 15,0 | 2685 | 2600 | 2545 | 2462 | 87 | 168 | 25 | 18 | 5 | 42 | 56 | M39 | 786 |
| 2600 | 2620,0 | 16,0 | 2905 | 2810 | 2750 | 2665 | 91 | 175 | 25 | 18 | 5 | 48 | 60 | M45 | 1021 |
| 2800 | 2820,0 | 17,0 | 3115 | 3020 | 2960 | 2865 | 101 | 188 | 30 | 18 | 5 | 48 | 64 | M45 | 1256 |
| 3000 | 3020,0 | 20,0 | 3315 | 3220 | 3160 | 3068 | 102 | 192 | 30 | 18 | 5 | 48 | 68 | M45 | 1404 |
| 3200 | 3220,0 | 20,0 | 3525 | 3430 | 3370 | 3272 | 106 | 202 | 30 | 20 | 5 | 48 | 72 | M45 | 1617 |
| 3400 | 3420,0 | 22,0 | 3735 | 3640 | 3580 | 3475 | 110 | 214 | 35 | 20 | 5 | 48 | 76 | M45 | 1877 |
| 3600 | 3630,0 | 22,0 | 3970 | 3860 | 3790 | 3678 | 124 | 229 | 35 | 20 | 5 | 56 | 80 | M52 | 2366 |

Maße / dimensions in mm

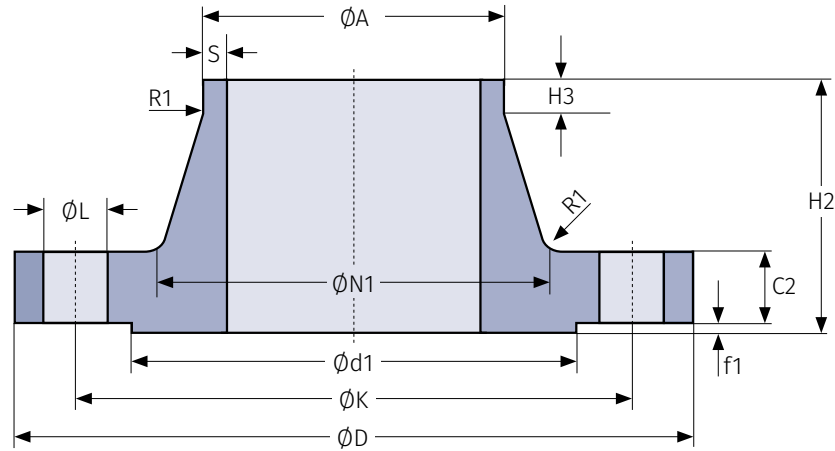
n = Anzahl Schraubenlöcher / number of bolts holes

M = Schraubengröße / size of bolts

WELD-NECK FLANGE

VORSCHWEISSFLANSCH TYP 11 PN 10

nach EN 1092-1



TYP 11 PN 10

Maße für DN < 50 siehe PN 40 / Dimensions for DN < 50 see PN 40
Maße für DN 50 - 200 siehe PN 16 / Dimensions for DN 50 - 200 see PN 16

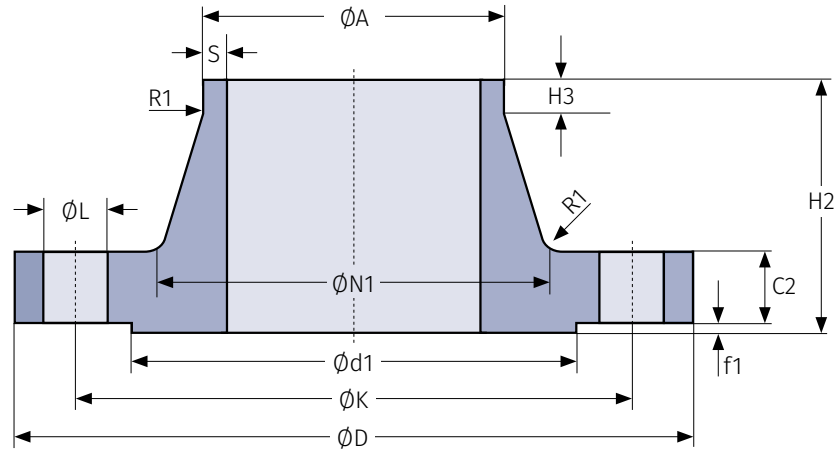
| DN | A | S | D | K | d1 | N1 | C2 | H2 | H3 | R1 | f1 | L | n | M | kg |
|------|--------|------|------|------|------|------|-----|-----|----|----|----|----|----|-----|------|
| 200 | 219,1 | 6,3 | 340 | 295 | 268 | 234 | 24 | 62 | 16 | 10 | 3 | 22 | 8 | M20 | 11,6 |
| 250 | 273,0 | 6,3 | 395 | 350 | 320 | 292 | 26 | 68 | 16 | 12 | 3 | 22 | 12 | M20 | 15,8 |
| 300 | 323,9 | 7,1 | 445 | 400 | 370 | 342 | 26 | 68 | 16 | 12 | 4 | 22 | 12 | M20 | 18,3 |
| 350 | 355,6 | 7,1 | 505 | 460 | 430 | 385 | 26 | 68 | 16 | 12 | 4 | 22 | 16 | M20 | 25,3 |
| 400 | 406,4 | 7,1 | 565 | 515 | 482 | 440 | 26 | 72 | 16 | 12 | 4 | 26 | 16 | M24 | 30,6 |
| 450 | 457,0 | 7,1 | 615 | 565 | 532 | 488 | 28 | 72 | 16 | 12 | 4 | 26 | 20 | M24 | 35,1 |
| 500 | 508,0 | 7,1 | 670 | 620 | 585 | 542 | 28 | 75 | 16 | 12 | 4 | 26 | 20 | M24 | 40,5 |
| 600 | 610,0 | 8,0 | 780 | 725 | 685 | 642 | 30 | 82 | 18 | 12 | 5 | 30 | 20 | M27 | 52,9 |
| 700 | 711,0 | 8,8 | 895 | 840 | 800 | 746 | 35 | 85 | 18 | 12 | 5 | 30 | 24 | M27 | 75,8 |
| 800 | 813,0 | 8,8 | 1015 | 950 | 905 | 850 | 38 | 96 | 18 | 12 | 5 | 33 | 24 | M30 | 102 |
| 900 | 914,0 | 12,5 | 1115 | 1050 | 1005 | 950 | 38 | 99 | 20 | 12 | 5 | 33 | 28 | M30 | 121 |
| 1000 | 1016,0 | 12,5 | 1230 | 1160 | 1110 | 1052 | 44 | 105 | 20 | 16 | 5 | 36 | 28 | M33 | 161 |
| 1200 | 1219,0 | 12,5 | 1455 | 1380 | 1330 | 1256 | 55 | 132 | 25 | 16 | 5 | 39 | 32 | M36 | 258 |
| 1400 | 1422,0 | 14,2 | 1675 | 1590 | 1535 | 1460 | 65 | 143 | 25 | 16 | 5 | 42 | 36 | M39 | 371 |
| 1600 | 1626,0 | 16,0 | 1915 | 1820 | 1760 | 1666 | 75 | 159 | 25 | 16 | 5 | 48 | 40 | M45 | 547 |
| 1800 | 1829,0 | 17,5 | 2115 | 2020 | 1960 | 1868 | 85 | 175 | 30 | 16 | 5 | 48 | 44 | M45 | 691 |
| 2000 | 2032,0 | 17,5 | 2325 | 2230 | 2170 | 2072 | 90 | 186 | 30 | 16 | 5 | 48 | 48 | M45 | 830 |
| 2200 | 2235,0 | 20,0 | 2550 | 2440 | 2370 | 2275 | 100 | 202 | 35 | 18 | 5 | 56 | 52 | M52 | 1073 |
| 2400 | 2438,0 | 22,2 | 2760 | 2650 | 2570 | 2478 | 110 | 218 | 35 | 18 | 5 | 56 | 56 | M52 | 1329 |
| 2600 | 2620,0 | 25,0 | 2960 | 2850 | 2780 | 2680 | 110 | 224 | 40 | 18 | 5 | 56 | 60 | M52 | 1574 |
| 2800 | 2820,0 | 25,0 | 3180 | 3070 | 3000 | 2882 | 124 | 244 | 40 | 18 | 5 | 56 | 64 | M52 | 1987 |
| 3000 | 3020,0 | 32,0 | 3405 | 3290 | 3210 | 3085 | 132 | 257 | 45 | 18 | 5 | 62 | 68 | M56 | 2476 |

Maße / dimensions in mm
n = Anzahl Schraubenlöcher / number of bolts holes
M = Schraubengröße / size of bolts

TYP 11 PN 10

WELD-NECK FLANGE
**VORSCHWEISSFLANSCH
TYP 11 PN 16**

nach EN 1092-1


TYP 11 PN 16

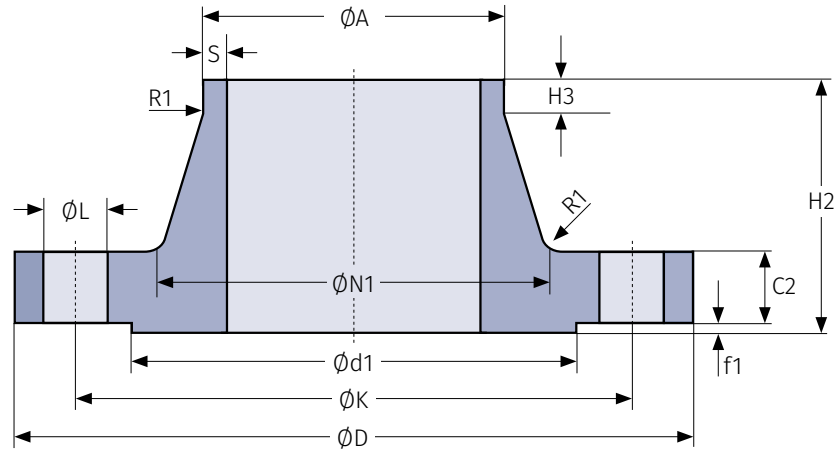
Maße für DN < 50 siehe PN 40 / Dimensions for DN < 50 see PN 40

| DN | A | S | D | K | d1 | R1 | C2 | H2 | H3 | R1 | f1 | L | n | M | kg |
|------|-------|------|------|------|------|----|-----|-----|----|----|----|----|----------------|-----|------|
| 50 | 60,3 | 2,9 | 165 | 125 | 102 | 6 | 18 | 45 | 8 | 6 | 3 | 18 | 4 | M16 | 2,53 |
| 65 | 76,1 | 2,9 | 185 | 145 | 122 | 6 | 18 | 45 | 10 | 6 | 3 | 18 | 8 ^a | M16 | 3,03 |
| 80 | 88,9 | 3,2 | 200 | 160 | 138 | 6 | 20 | 50 | 10 | 6 | 3 | 18 | 8 | M16 | 3,92 |
| 100 | 114,3 | 3,6 | 220 | 180 | 158 | 8 | 20 | 52 | 12 | 8 | 3 | 18 | 8 | M16 | 4,62 |
| 125 | 139,7 | 4,0 | 250 | 210 | 188 | 8 | 22 | 55 | 12 | 8 | 3 | 18 | 8 | M16 | 6,30 |
| 150 | 168,3 | 4,5 | 285 | 240 | 212 | 10 | 22 | 55 | 12 | 10 | 3 | 22 | 8 | M20 | 7,81 |
| 200 | 219,1 | 6,3 | 340 | 295 | 268 | 10 | 24 | 62 | 16 | 10 | 3 | 22 | 12 | M20 | 11,5 |
| 250 | 273,0 | 6,3 | 405 | 355 | 320 | 12 | 26 | 70 | 16 | 12 | 3 | 26 | 12 | M24 | 16,7 |
| 300 | 323,9 | 7,1 | 460 | 410 | 378 | 12 | 28 | 78 | 16 | 12 | 4 | 26 | 12 | M24 | 22,1 |
| 350 | 355,6 | 8,0 | 520 | 470 | 438 | 12 | 30 | 82 | 16 | 12 | 4 | 26 | 16 | M24 | 32,8 |
| 400 | 406,4 | 8,0 | 580 | 525 | 490 | 12 | 32 | 85 | 16 | 12 | 4 | 30 | 16 | M27 | 41,1 |
| 450 | 457,0 | 8,8 | 640 | 585 | 550 | 12 | 34 | 83 | 16 | 12 | 4 | 30 | 20 | M27 | 48,5 |
| 500 | 508,0 | 8,8 | 715 | 650 | 610 | 12 | 36 | 84 | 16 | 12 | 4 | 33 | 20 | M30 | 63,4 |
| 600 | 610,0 | 10,0 | 840 | 770 | 725 | 12 | 40 | 88 | 18 | 12 | 5 | 36 | 20 | M33 | 94,0 |
| 700 | 711,0 | 11,0 | 910 | 840 | 795 | 12 | 40 | 104 | 18 | 12 | 5 | 36 | 24 | M33 | 96,5 |
| 800 | 813,0 | 12,5 | 1025 | 950 | 900 | 12 | 41 | 108 | 20 | 12 | 5 | 39 | 24 | M36 | 122 |
| 900 | 914,0 | 12,5 | 1125 | 1050 | 1000 | 12 | 48 | 118 | 20 | 12 | 5 | 39 | 28 | M36 | 155 |
| 1000 | 1016 | 12,5 | 1255 | 1170 | 1115 | 16 | 59 | 137 | 22 | 16 | 5 | 42 | 28 | M39 | 233 |
| 1200 | 1219 | 14,2 | 1485 | 1390 | 1330 | 16 | 78 | 160 | 30 | 16 | 5 | 48 | 32 | M45 | 390 |
| 1400 | 1422 | 16,0 | 1685 | 1590 | 1530 | 16 | 84 | 177 | 30 | 16 | 5 | 48 | 36 | M45 | 495 |
| 1600 | 1626 | 17,5 | 1930 | 1820 | 1750 | 16 | 102 | 204 | 35 | 16 | 5 | 56 | 40 | M52 | 760 |
| 1800 | 1829 | 20,0 | 2130 | 2020 | 1950 | 16 | 110 | 218 | 35 | 16 | 5 | 56 | 44 | M52 | 929 |
| 2000 | 2032 | 22,0 | 2345 | 2230 | 2150 | 16 | 124 | 238 | 40 | 16 | 5 | 62 | 48 | M56 | 1185 |

TYP 11 PN 16

WELD-NECK FLANGE
**VORSCHWEISSFLANSCH
TYP 11 PN 25 / PN 40**

nach EN 1092-1


TYP 11 PN 25

Maße für DN < 200 siehe PN 40 / Dimensions for DN < 200 see PN 40

| DN | A | S | D | K | d1 | N1 | C2 | H2 | H3 | R1 | f1 | L | n | M | kg |
|------|--------|------|------|------|------|------|----|-----|----|----|----|----|----|-----|------|
| 200 | 219,1 | 6,3 | 360 | 310 | 278 | 244 | 30 | 80 | 16 | 10 | 3 | 26 | 12 | M24 | 17,1 |
| 250 | 273,0 | 7,1 | 425 | 370 | 335 | 298 | 32 | 88 | 18 | 12 | 3 | 30 | 12 | M27 | 24,3 |
| 300 | 323,9 | 8,0 | 485 | 430 | 395 | 352 | 34 | 92 | 18 | 12 | 4 | 30 | 16 | M27 | 31,8 |
| 350 | 355,6 | 8,0 | 555 | 490 | 450 | 398 | 38 | 100 | 20 | 12 | 4 | 33 | 16 | M30 | 48,8 |
| 400 | 406,4 | 8,8 | 620 | 550 | 505 | 452 | 40 | 110 | 20 | 12 | 4 | 36 | 16 | M33 | 63,3 |
| 450 | 457,0 | 8,8 | 670 | 600 | 555 | 500 | 46 | 110 | 20 | 12 | 4 | 36 | 20 | M33 | 76,0 |
| 500 | 508,0 | 10,0 | 730 | 660 | 615 | 558 | 48 | 125 | 20 | 12 | 4 | 36 | 20 | M33 | 97,0 |
| 600 | 610,0 | 12,5 | 845 | 770 | 720 | 660 | 48 | 125 | 20 | 12 | 5 | 39 | 20 | M36 | 121 |
| 700 | 711,0 | 14,2 | 960 | 875 | 820 | 760 | 50 | 129 | 20 | 12 | 5 | 42 | 24 | M39 | 155 |
| 800 | 813,0 | 16,0 | 1085 | 990 | 930 | 864 | 53 | 138 | 22 | 12 | 5 | 48 | 24 | M45 | 205 |
| 900 | 914,0 | 17,5 | 1185 | 1090 | 1030 | 968 | 57 | 148 | 24 | 12 | 5 | 48 | 28 | M45 | 249 |
| 1000 | 1016,0 | 20,0 | 1320 | 1210 | 1140 | 1070 | 63 | 160 | 24 | 16 | 5 | 56 | 28 | M52 | 338 |

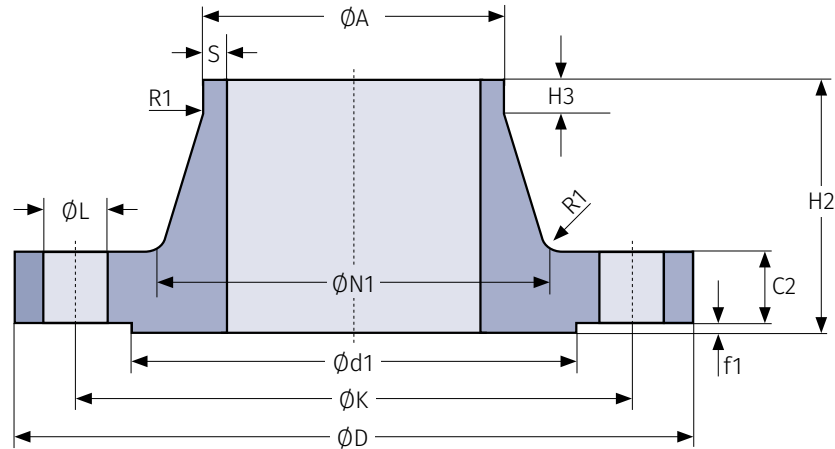
TYP 11 PN 40

| DN | A | S | D | K | d1 | N1 | C2 | H2 | H3 | R1 | f1 | L | n | M | kg |
|-----|-------|------|-----|-----|-----|-----|----|-----|----|----|----|----|----|-----|-------|
| 10 | 17,2 | 2,0 | 90 | 60 | 40 | 28 | 16 | 35 | 6 | 4 | 2 | 14 | 4 | M12 | 0,678 |
| 15 | 21,3 | 2,0 | 95 | 65 | 45 | 32 | 16 | 38 | 6 | 4 | 2 | 14 | 4 | M12 | 0,768 |
| 20 | 26,9 | 2,3 | 105 | 75 | 58 | 40 | 18 | 40 | 6 | 4 | 2 | 14 | 4 | M12 | 1,09 |
| 25 | 33,7 | 2,6 | 115 | 85 | 68 | 46 | 18 | 40 | 6 | 4 | 2 | 14 | 4 | M12 | 1,30 |
| 32 | 42,4 | 2,6 | 140 | 100 | 78 | 56 | 18 | 42 | 6 | 6 | 2 | 18 | 4 | M16 | 1,91 |
| 40 | 48,3 | 2,6 | 150 | 110 | 88 | 64 | 18 | 45 | 7 | 6 | 3 | 18 | 4 | M16 | 2,15 |
| 50 | 60,3 | 2,9 | 165 | 125 | 102 | 75 | 20 | 48 | 8 | 6 | 3 | 18 | 4 | M16 | 2,85 |
| 65 | 76,1 | 2,9 | 185 | 145 | 122 | 90 | 22 | 52 | 10 | 6 | 3 | 18 | 8 | M16 | 3,68 |
| 80 | 88,9 | 3,2 | 200 | 160 | 138 | 105 | 24 | 58 | 12 | 8 | 3 | 18 | 8 | M16 | 4,78 |
| 100 | 114,3 | 3,6 | 235 | 190 | 162 | 134 | 24 | 65 | 12 | 8 | 3 | 22 | 8 | M20 | 6,46 |
| 125 | 139,7 | 4,0 | 270 | 220 | 188 | 162 | 26 | 68 | 12 | 8 | 3 | 26 | 8 | M24 | 8,86 |
| 150 | 168,3 | 4,5 | 300 | 250 | 218 | 192 | 28 | 75 | 12 | 10 | 3 | 26 | 8 | M24 | 11,7 |
| 200 | 219,1 | 6,3 | 375 | 320 | 285 | 244 | 34 | 88 | 16 | 10 | 3 | 30 | 12 | M27 | 21,0 |
| 250 | 273,0 | 7,1 | 450 | 385 | 345 | 306 | 38 | 105 | 18 | 12 | 3 | 33 | 12 | M30 | 34,2 |
| 300 | 323,9 | 8,0 | 515 | 450 | 410 | 362 | 42 | 115 | 18 | 12 | 4 | 33 | 16 | M30 | 47,6 |
| 350 | 355,6 | 8,8 | 580 | 510 | 465 | 408 | 46 | 125 | 20 | 12 | 4 | 36 | 16 | M33 | 69,3 |
| 400 | 406,4 | 11,0 | 660 | 585 | 535 | 462 | 50 | 135 | 20 | 12 | 4 | 39 | 16 | M36 | 98 |
| 450 | 457,0 | 12,5 | 685 | 610 | 560 | 500 | 57 | 135 | 20 | 12 | 4 | 39 | 20 | M36 | 105 |
| 500 | 508,0 | 14,2 | 755 | 670 | 615 | 562 | 57 | 140 | 20 | 12 | 4 | 42 | 20 | M39 | 130 |
| 600 | 610,0 | 16,0 | 890 | 795 | 735 | 666 | 72 | 150 | 20 | 12 | 5 | 48 | 20 | M45 | 209 |

 Maße / dimensions in mm
 n = Anzahl Schraubenlöcher / number of bolts holes
 M = Schraubengröße / size of bolts

WELD-NECK FLANGE
**VORSCHWEISSFLANSCH
TYP 11 PN 63 / PN 100**

nach EN 1092-1


TYP 11 PN 63

Maße für DN < 50 siehe PN 100 / Dimensions for DN < 50 see PN 100

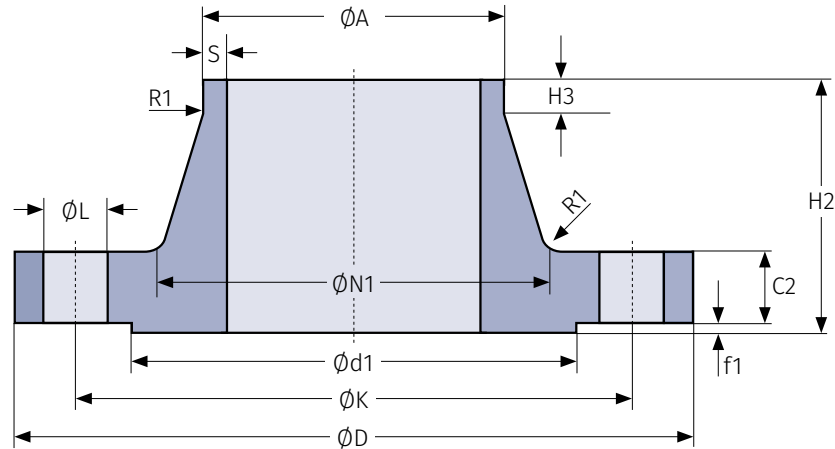
| DN | A | S | D | K | d1 | N1 | C2 | H2 | H3 | R1 | f1 | L | n | M | kg |
|-----|-------|------|-----|-----|-----|-----|----|-----|----|----|----|----|----|-----|------|
| 50 | 60,3 | 2,9 | 180 | 135 | 102 | 82 | 26 | 62 | 10 | 6 | 3 | 22 | 4 | M20 | 4,51 |
| 65 | 76,1 | 3,2 | 205 | 160 | 122 | 98 | 26 | 68 | 12 | 6 | 3 | 22 | 8 | M20 | 5,58 |
| 80 | 88,9 | 3,6 | 215 | 170 | 138 | 112 | 28 | 72 | 12 | 8 | 3 | 22 | 8 | M20 | 6,68 |
| 100 | 114,3 | 4,0 | 250 | 200 | 162 | 138 | 30 | 78 | 12 | 8 | 3 | 26 | 8 | M24 | 9,27 |
| 125 | 139,7 | 4,5 | 295 | 240 | 188 | 168 | 34 | 88 | 12 | 8 | 3 | 30 | 8 | M27 | 14,5 |
| 150 | 168,3 | 5,6 | 345 | 280 | 218 | 202 | 36 | 95 | 12 | 10 | 3 | 33 | 8 | M30 | 21,4 |
| 200 | 219,1 | 7,1 | 415 | 345 | 285 | 256 | 42 | 110 | 16 | 10 | 3 | 36 | 12 | M33 | 34,1 |
| 250 | 273,0 | 8,8 | 470 | 400 | 345 | 316 | 46 | 125 | 18 | 12 | 3 | 36 | 12 | M33 | 48,3 |
| 300 | 323,9 | 11,0 | 530 | 460 | 410 | 372 | 52 | 140 | 18 | 12 | 4 | 36 | 16 | M33 | 67,5 |
| 350 | 355,6 | 12,5 | 600 | 525 | 465 | 420 | 56 | 150 | 20 | 12 | 4 | 39 | 16 | M36 | 97,8 |
| 400 | 406,4 | 14,2 | 670 | 585 | 535 | 475 | 60 | 160 | 20 | 12 | 4 | 42 | 16 | M39 | 129 |

TYP 11 PN 100

| DN | A | S | D | K | d1 | N1 | C2 | H2 | H3 | R1 | f1 | L | n | M | kg |
|-----|-------|------|-----|-----|-----|-----|----|-----|----|----|----|----|----|-----|------|
| 10 | 17,2 | 2,0 | 100 | 70 | 40 | 32 | 20 | 45 | 6 | 4 | 2 | 14 | 4 | M12 | 1,09 |
| 15 | 21,3 | 2,0 | 105 | 75 | 45 | 34 | 20 | 45 | 6 | 4 | 2 | 14 | 4 | M12 | 1,20 |
| 20 | 26,9 | 2,6 | 130 | 90 | 58 | 42 | 22 | 48 | 8 | 4 | 2 | 18 | 4 | M16 | 2,02 |
| 25 | 33,7 | 2,6 | 140 | 100 | 68 | 52 | 24 | 58 | 8 | 4 | 2 | 18 | 4 | M16 | 2,63 |
| 32 | 42,4 | 2,9 | 155 | 110 | 78 | 62 | 24 | 60 | 8 | 6 | 2 | 22 | 4 | M20 | 3,20 |
| 40 | 48,3 | 2,9 | 170 | 125 | 88 | 70 | 26 | 62 | 10 | 6 | 3 | 22 | 4 | M20 | 4,07 |
| 50 | 60,3 | 3,2 | 195 | 145 | 102 | 90 | 28 | 68 | 10 | 6 | 3 | 26 | 4 | M24 | 5,82 |
| 65 | 76,1 | 3,6 | 220 | 170 | 122 | 108 | 30 | 76 | 12 | 6 | 3 | 26 | 8 | M24 | 7,57 |
| 80 | 88,9 | 4,0 | 230 | 180 | 138 | 120 | 32 | 78 | 12 | 8 | 3 | 26 | 8 | M24 | 8,82 |
| 100 | 114,3 | 5,0 | 265 | 210 | 162 | 150 | 36 | 90 | 12 | 8 | 3 | 30 | 8 | M27 | 13,1 |
| 125 | 139,7 | 6,3 | 315 | 250 | 188 | 180 | 40 | 105 | 12 | 8 | 3 | 33 | 8 | M30 | 21,0 |
| 150 | 168,3 | 7,1 | 355 | 290 | 218 | 210 | 44 | 115 | 12 | 10 | 3 | 33 | 12 | M30 | 28,3 |
| 200 | 219,1 | 10,0 | 430 | 360 | 285 | 278 | 52 | 130 | 16 | 10 | 3 | 36 | 12 | M33 | 50,2 |
| 250 | 273,0 | 12,5 | 505 | 430 | 345 | 340 | 60 | 157 | 18 | 12 | 3 | 39 | 12 | M36 | 81,4 |
| 300 | 323,9 | 14,2 | 585 | 500 | 410 | 400 | 68 | 170 | 18 | 12 | 4 | 42 | 16 | M39 | 118 |
| 350 | 355,6 | 16,0 | 655 | 560 | 465 | 460 | 74 | 189 | 20 | 12 | 4 | 48 | 16 | M45 | 169 |

WELD-NECK FLANGE
**VORSCHWEISSFLANSCH
TYP 11 PN 160 / PN 250**

nach EN 1092-1


TYP 11 PN 160

| DN | A | S | D | K | d1 | N1 | C2 | H2 | H3 | R1 | f1 | L | n | M | kg |
|-----|-------|------|-----|-----|-----|-----|----|-----|----|----|----|----|----|-----|------|
| 10 | 17,2 | 2,0 | 100 | 70 | 40 | 32 | 20 | 45 | 6 | 4 | 2 | 14 | 4 | M12 | 1,10 |
| 15 | 21,3 | 2,0 | 105 | 75 | 45 | 34 | 20 | 45 | 6 | 4 | 2 | 14 | 4 | M12 | 1,20 |
| 25 | 33,7 | 2,9 | 140 | 100 | 68 | 52 | 24 | 58 | 8 | 4 | 2 | 18 | 4 | M16 | 2,64 |
| 40 | 48,3 | 3,6 | 170 | 125 | 88 | 70 | 28 | 64 | 10 | 6 | 3 | 22 | 4 | M20 | 4,42 |
| 50 | 60,3 | 4,0 | 195 | 145 | 102 | 90 | 30 | 75 | 10 | 6 | 3 | 26 | 4 | M24 | 6,38 |
| 65 | 76,1 | 5,0 | 220 | 170 | 122 | 108 | 34 | 82 | 12 | 6 | 3 | 26 | 8 | M24 | 8,75 |
| 80 | 88,9 | 6,3 | 230 | 180 | 138 | 120 | 36 | 86 | 12 | 8 | 3 | 26 | 8 | M24 | 10,3 |
| 100 | 114,3 | 8,0 | 265 | 210 | 162 | 150 | 40 | 100 | 12 | 8 | 3 | 30 | 8 | M27 | 15,3 |
| 125 | 139,7 | 10,0 | 315 | 250 | 188 | 180 | 44 | 115 | 14 | 8 | 3 | 33 | 8 | M30 | 24,4 |
| 150 | 168,3 | 12,5 | 355 | 290 | 218 | 210 | 50 | 128 | 14 | 10 | 3 | 33 | 12 | M30 | 34,4 |
| 200 | 219,1 | 16,0 | 430 | 360 | 285 | 278 | 60 | 140 | 16 | 10 | 3 | 36 | 12 | M33 | 60,7 |
| 250 | 273,0 | 20,0 | 515 | 430 | 345 | 340 | 68 | 155 | 18 | 12 | 3 | 42 | 12 | M39 | 97,6 |
| 300 | 323,9 | 22,2 | 585 | 500 | 410 | 400 | 78 | 175 | 18 | 12 | 4 | 42 | 16 | M39 | 140 |

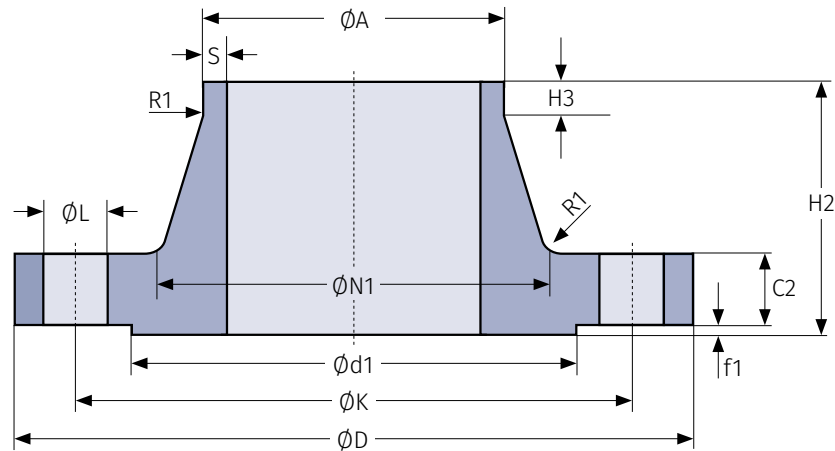
TYP 11 PN 250

Maße für DN 10 siehe PN 320 / Dimensions for DN 10 see PN 320

| DN | A | S | D | K | d1 | N1 | C2 | H2 | H3 | R1 | f1 | L | n | M | kg |
|-----|-------|------|-----|-----|-----|-----|-----|-----|----|----|----|----|----|-----|------|
| 15 | 21,3 | 2,6 | 130 | 90 | 45 | 48 | 26 | 60 | 6 | 4 | 2 | 18 | 4 | M16 | 2,51 |
| 25 | 33,7 | 3,6 | 150 | 105 | 68 | 60 | 28 | 65 | 8 | 4 | 2 | 22 | 4 | M20 | 3,58 |
| 40 | 48,3 | 5,0 | 185 | 135 | 88 | 84 | 34 | 80 | 10 | 6 | 3 | 26 | 4 | M24 | 6,72 |
| 50 | 60,3 | 6,3 | 200 | 150 | 102 | 95 | 38 | 85 | 10 | 6 | 3 | 26 | 8 | M24 | 8,22 |
| 65 | 76,1 | 8,0 | 230 | 180 | 122 | 124 | 42 | 95 | 12 | 6 | 3 | 26 | 8 | M24 | 12,8 |
| 80 | 101,6 | 11,0 | 255 | 200 | 138 | 136 | 46 | 102 | 12 | 8 | 3 | 30 | 8 | M27 | 16,5 |
| 100 | 127,0 | 14,2 | 300 | 235 | 162 | 164 | 54 | 120 | 14 | 8 | 3 | 33 | 8 | M30 | 27,2 |
| 125 | 152,4 | 16,0 | 340 | 275 | 188 | 200 | 60 | 140 | 16 | 8 | 3 | 33 | 12 | M30 | 39,0 |
| 150 | 177,8 | 17,5 | 390 | 320 | 218 | 240 | 68 | 160 | 18 | 10 | 3 | 36 | 12 | M33 | 59,6 |
| 200 | 244,5 | 25,0 | 485 | 400 | 285 | 305 | 82 | 190 | 25 | 10 | 3 | 42 | 12 | M39 | 110 |
| 250 | 298,5 | 32,0 | 585 | 490 | 345 | 385 | 100 | 215 | 30 | 12 | 3 | 48 | 16 | M45 | 190 |

WELD-NECK FLANGE
**VORSCHWEISSFLANSCH
 TYP 11 PN 320 / PN 400**

nach EN 1092-1


TYP 11 PN 320

| DN | A | S | D | K | d1 | N1 | C2 | H2 | H3 | R1 | f1 | L | n | M | kg |
|-----|-------|------|-----|-----|-----|-----|-----|-----|----|----|----|----|----|-----|------|
| 10 | 17,2 | 2,6 | 125 | 85 | 40 | 44 | 24 | 58 | 6 | 4 | 2 | 18 | 4 | M16 | 2,14 |
| 15 | 21,3 | 3,2 | 130 | 90 | 45 | 48 | 26 | 60 | 6 | 4 | 2 | 18 | 4 | M16 | 2,53 |
| 25 | 33,7 | 5,0 | 160 | 115 | 68 | 68 | 34 | 78 | 8 | 4 | 2 | 22 | 4 | M20 | 5,18 |
| 40 | 48,3 | 6,3 | 195 | 145 | 88 | 92 | 38 | 88 | 10 | 6 | 3 | 26 | 4 | M24 | 8,65 |
| 50 | 63,5 | 8,0 | 210 | 160 | 102 | 106 | 42 | 100 | 10 | 6 | 3 | 26 | 8 | M24 | 10,7 |
| 65 | 88,9 | 11,0 | 255 | 200 | 122 | 138 | 51 | 120 | 12 | 6 | 3 | 30 | 8 | M27 | 19,5 |
| 80 | 101,6 | 12,5 | 275 | 220 | 138 | 156 | 55 | 130 | 14 | 8 | 3 | 30 | 8 | M27 | 25,2 |
| 100 | 133,0 | 16,0 | 335 | 265 | 162 | 186 | 65 | 145 | 16 | 8 | 3 | 36 | 8 | M33 | 42,5 |
| 125 | 168,3 | 20,0 | 380 | 310 | 188 | 230 | 75 | 175 | 20 | 8 | 3 | 36 | 12 | M33 | 63,6 |
| 150 | 193,7 | 25,0 | 425 | 350 | 218 | 265 | 84 | 195 | 25 | 10 | 3 | 39 | 12 | M36 | 91,5 |
| 200 | 244,5 | 30,0 | 525 | 440 | 285 | 345 | 103 | 235 | 30 | 10 | 3 | 42 | 16 | M39 | 172 |
| 250 | 323,9 | 40,0 | 640 | 540 | 345 | 428 | 125 | 300 | 40 | 12 | 3 | 52 | 16 | M48 | 312 |

TYP 11 PN 400

| DN | A | S | D | K | d1 | N1 | C2 | H2 | H3 | R1 | f1 | L | n | M | kg |
|-----|-------|------|-----|-----|-----|-----|-----|-----|----|----|----|----|----|-----|------|
| 10 | 17,2 | 3,6 | 125 | 85 | 40 | 48 | 28 | 65 | 8 | 4 | 2 | 18 | 4 | M16 | 2,55 |
| 15 | 26,9 | 5,0 | 145 | 100 | 45 | 56 | 30 | 68 | 8 | 4 | 2 | 22 | 4 | M20 | 3,62 |
| 25 | 42,4 | 7,1 | 180 | 130 | 68 | 82 | 38 | 90 | 10 | 4 | 2 | 26 | 4 | M24 | 7,45 |
| 40 | 60,3 | 10,0 | 220 | 165 | 88 | 106 | 48 | 110 | 12 | 6 | 3 | 30 | 4 | M27 | 14,1 |
| 50 | 76,1 | 12,5 | 235 | 180 | 102 | 120 | 52 | 120 | 15 | 6 | 3 | 30 | 8 | M27 | 16,7 |
| 65 | 101,6 | 16,0 | 290 | 225 | 122 | 158 | 64 | 135 | 18 | 6 | 3 | 33 | 8 | M30 | 31,6 |
| 80 | 114,3 | 17,5 | 305 | 240 | 138 | 174 | 68 | 150 | 20 | 8 | 3 | 33 | 8 | M30 | 38,4 |
| 100 | 139,7 | 22,2 | 370 | 295 | 162 | 216 | 80 | 175 | 25 | 8 | 3 | 39 | 8 | M36 | 67,3 |
| 125 | 193,7 | 30,0 | 415 | 340 | 188 | 258 | 92 | 200 | 30 | 8 | 3 | 39 | 12 | M36 | 94,5 |
| 150 | 219,1 | 35,0 | 475 | 390 | 218 | 302 | 105 | 225 | 35 | 10 | 3 | 42 | 12 | M39 | 145 |
| 200 | 273,0 | 40,0 | 585 | 490 | 285 | 388 | 130 | 280 | 40 | 10 | 3 | 48 | 16 | M45 | 270 |